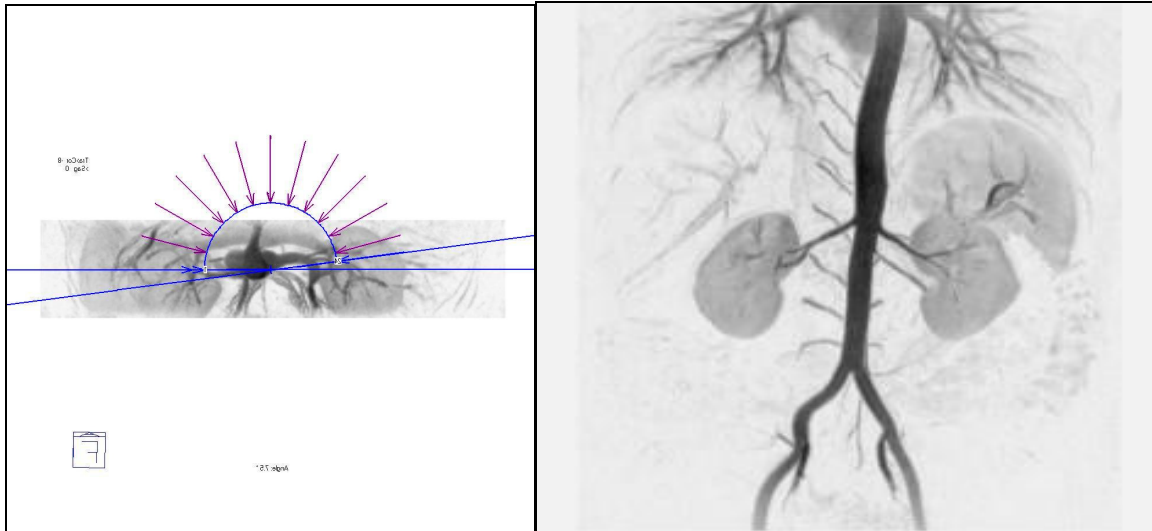
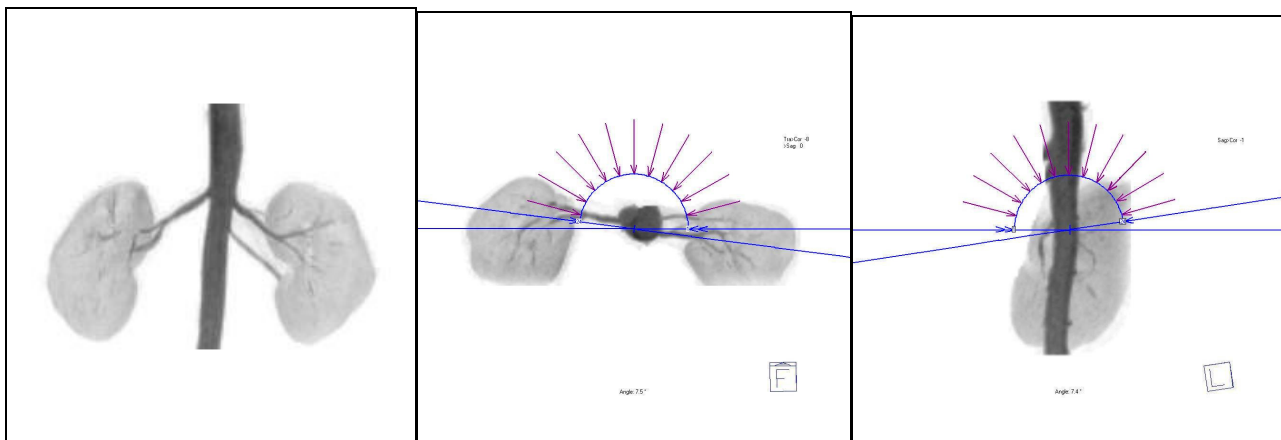


RENAL MRA MIP INSTRUCTIONS (March 27, 2006)



Subtract the pre-contrast source images from the post-contrast source images. Use the subtracted series to create a MIP series of 24 images from the left side of the patient to the right side of the patient in 7.5 degree increments. Do not cut out anything on this MIP series.



Use the subtracted series to create the next two MIP series. First cut out all unnecessary data leaving only the kidneys, renal arteries, and part of the aorta above and below the kidneys and renal arteries. Create a MIP series of 24 images from the left side of the patient to the right side of the patient in 7.5 degree increments. Then create a second MIP series of 24 images from anterior to posterior in a head over heels direction in 7.5 degree increments.