



Fluoroscopy Protocols

Hospital

Small Bowel Follow Through for Obstruction

Supplies: *120 mL Gastrografin
*2- 60 cc syringes - compatible with Nasogastric Tube connection

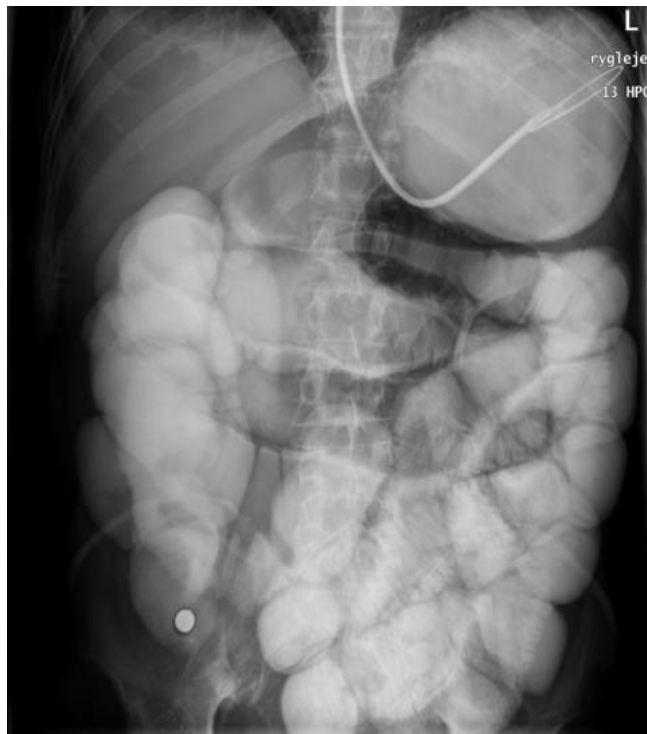
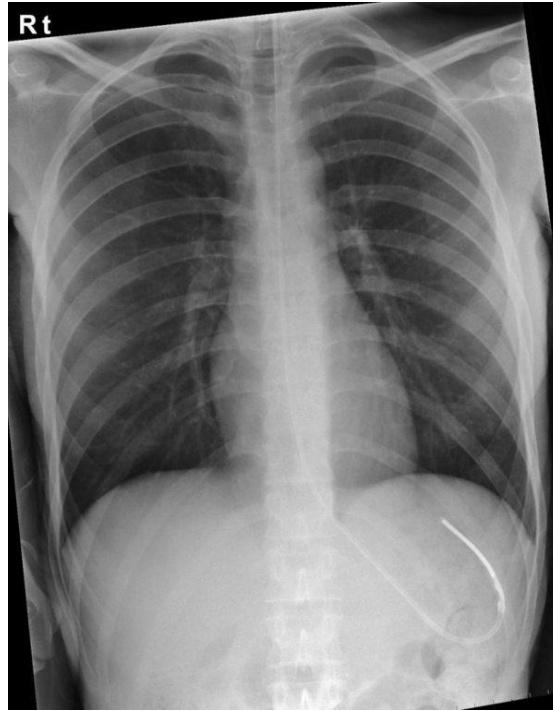
Caution: Confirm that the patient does not have an allergy to Iodine (Gastrografin).

*The ARA radiologists have requested a change to the SBFT for obstruction protocol. Effective immediately, please utilize protocol steps below and let us know if there are any questions.

Procedure:

- 1) Exam is ordered
- 2) Scout KUB obtained (Verify position of Nasogastric tube-as needed if unknown)
 - For unknown Nasogastric tube position regular business hours: Technologist will consult with onsite Radiologist to verify Nasogastric tube position
 - For unknown Nasogastric tube position after hours and weekends: Technologist will send Scout film and contact the Box (Ext: 3800) to confirm Nasogastric tube placement
- 3) Nasogastric tube taken off of suction
- 4) 120cc Gastrografin administered through the patient's Nasogastric tube
- 5) KUB obtained Immediately after administration of contrast-label Immediate
- 6) KUB obtained at 8 hours after administration of contrast- label 8 hours

Exam completed



Revised January 12, 2022
Reviewed January 23, 2024