



## Fluoroscopy Protocols Blood Patch

**\*If the patient has Medicare, this exam cannot be performed at IDTF sites (SW, RCP, or WMC).**

- \*Follow protocols set by each Neuro Radiologist-See Binder at site or on the Portal page under Operations, Fluoro Icon, Neuro Tray Set Up, Preferences.
- \*\*Assist the Neuro Radiologist with the exam.

**Scheduling and Prep:** \*Patient should be screened, consented, dressed and Medicated (if necessary) ahead of time by the Paramedics

### Blood Patch scheduling and Documentation Procedural Change

*Good afternoon,*

*The neuro section would like to implement a new process for patients referred to ARA for a blood patch when a lumbar puncture has been performed at a non-ARA facility. For the FLBP exam code, the below statement in the appointment booking messages will be updated as follows:*

***Current:*** *If the prior procedure was not performed at an ARA facility, the location of the outside facility needs to be noted in the comments.*

***New:*** *If the prior lumbar puncture was not performed at an ARA facility, approval to perform the blood patch needs to be obtained by the on-site radiologist before scheduling the patient. If approved, the location of the outside facility needs to be noted in the comments.*

*Please make sure your team is aware of this change and update any training/reference material.*



Thanks, **JULIE MCSWAIN** Project Manager, Operations

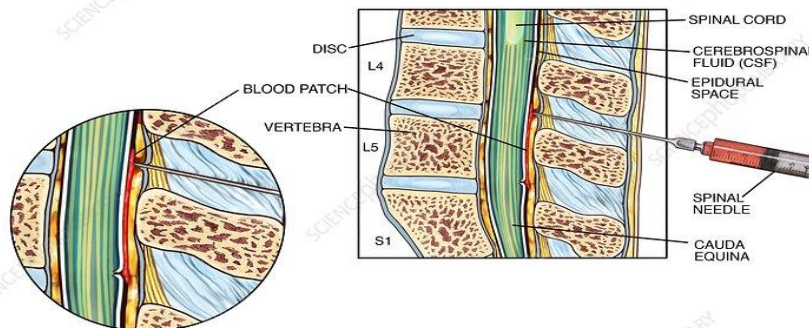
**Supplies:** \*Epidural tray \*Sterile gloves \*Betadine solution (warmed) \*Tourniquet  
\*Alcohol swabs \*Gloves for technologist \*3cc syringe \*10cc syringe  
Omni 240- Radiologist's preference \*Anatomical side marker

**Room Set-Up:** \*Open sterile tray \*Remove tower drapes \*Have gloves opened and supplies Available \*Patient should be prone with an IV catheter in arm \*Expose Lower back and shave if necessary \*Place an “L” or “R” marker on Underside of the Fluoro tower

**Procedure:** \*Assist neuro radiologist with the exam  
 \*When radiologist is ready with spinal needle in place, draw 3cc of blood through IV catheter and discard in appropriate container. Draw 10cc of blood and hand to radiologist.  
 \*Flush the IV with normal saline following procedure

**Spot Images:** \*Needle placement image-Fluoro save

**Post Blood Patch:** \*Patient should remain recumbent unless otherwise instructed by the Radiologist  
 \*Document- puncture time for the paramedics  
 \*Document Lot # and Expiration date from lidocaine and contrast in “Exam Notes” on MI  
 \*Patient must remain at the performing site for one hour following the Puncture time.



Reviewed and Revised January 23, 2024