

Imaging Protocol – CT TAVR

TAVR – Transcatheter aortic valve replacement

*Study contains 2 consecutive scans - #1 is of the heart and #2 is body angiography.

* Study is GATED

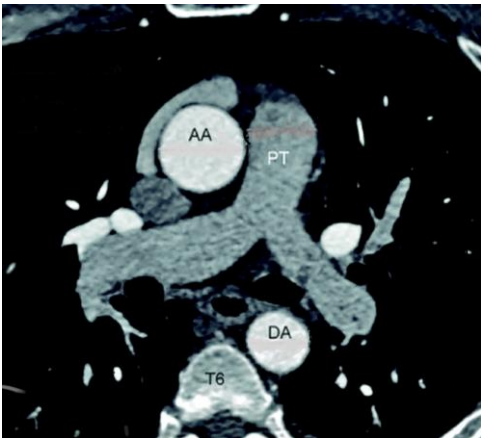
* Load CD in Burner

- 100 ml omni 350
- 100 ml sodium chloride 0.9
- Use Invivo ECG Electrodes
- Cardiac cable (Gated)
- All TAVR studies need to be burned on a CD

*Go to Cardiac folder and choose TAVR protocol

*Use Bolus Tracking and trigger off of the ascending aorta.

* The ROI is placed in the aortic root with a 7 second delay

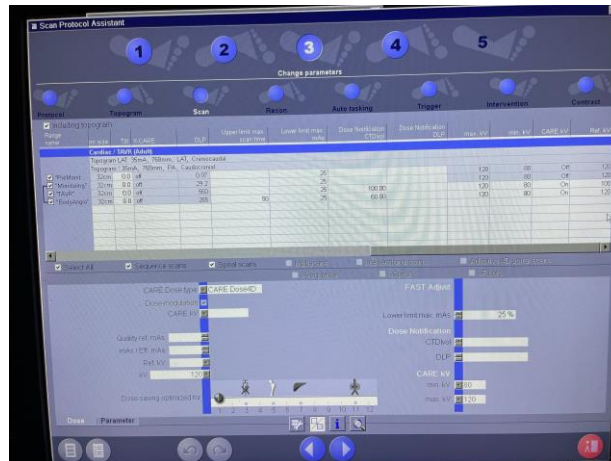
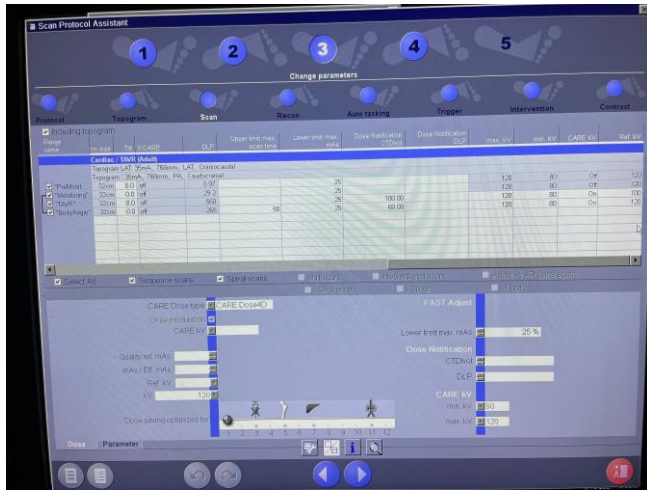
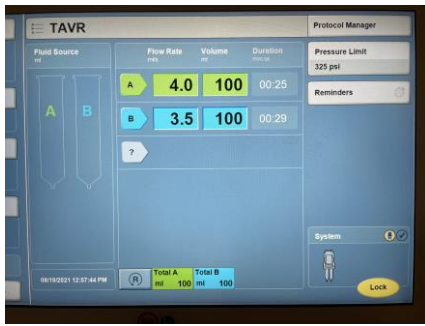


Heart Scan- A scan range of 12-15cm from the carina to the apex of the heart is usually sufficient.

- TAVR scan- Top of chest to lesser trochanters
- Box 1 : Data Acquisition – 2 x 2 with kernel of Bv38 and Cardiac window
- Four (4) other boxes in this scan are reconstructed 0.75 x 0.75 with a kernel of Bv38 and Cardiac Window.
 - One box is for Best Systolic and one is for Best Diastolic phases of the heart
- One box contain 30% to 70% phases of the heart

Body Angio-

- Box 1 : Data Acquisition – 3 x 3 with kernel Bv38 and CT Angio window
- Box 2 : Lung Window 5 x 5 with kernel Br59 and lung window
- Boxes 3-4 : MIP thins 10 x 2 with kernel Br38 and a mediastinum window
- Boxes 5-6 : MRPs 2 x 2 with kernel Br38 and a mediastinum window
- Box 7 : Body Angio axials 1 x 1 with kernel Bv38 and CT Angio window



PROTOCOL REVIEW 2025 01/df
 Approval Imaging Council January 2025