

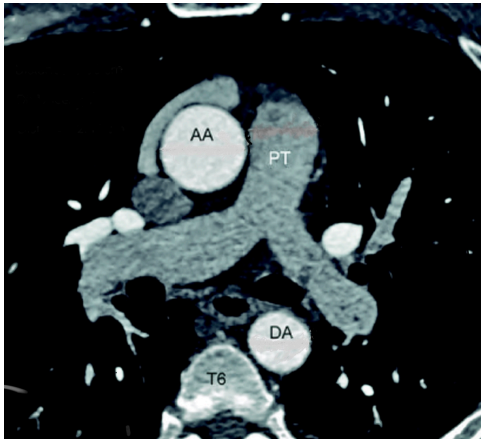
# TAVR

## Load CD in Burner

- 100 ml omni 350
- 100 ml sodium chloride 0.9
- Use Invivo ECG Electrodes
- Cardiac cable (Gated)
- All TAVR studies need to be burned on a CD

Go to Cardiac folder and choose TAVR protocol

Use Bolus Tracking and trigger off of the ascending aorta.



Heart Scan- A scan range of 12-15cm from the carina to the apex of the heart is usually sufficient.

TAVR scan- Top of chest to lesser trochanters

TAVR  
 Adult  
 CTDI range?  
 DFOV Less than 250mm  
 Exam summary instructions - See above  
 Injector set-up details.

